

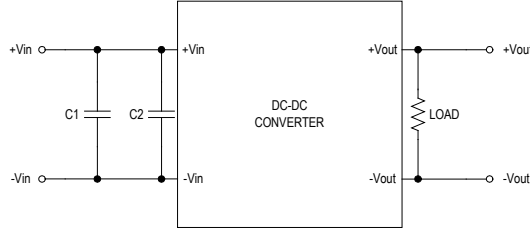


MINMAX[®]

MAEU01-HI Series - EMC Notes

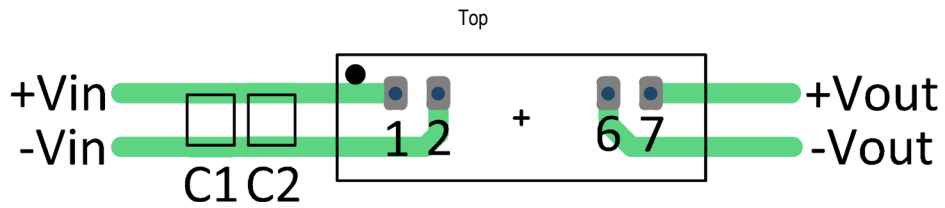
MAEU01-HI Series - EMC Notes

External Filter meets EMI Conducted EN 55032, class A



Model	Class A	
	C1	C2
MAEU01-05XXXHI	---	47 μ F/16V 1210 X5R
MAEU01-12XXXHI	---	47 μ F/16V 1210 X5R
MAEU01-24XXXHI	10 μ F/50V 1210 X7R	10 μ F/50V 1210 X7R

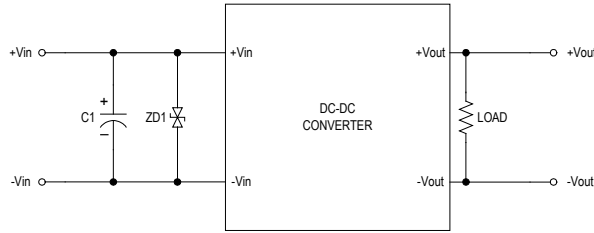
Recommended PCB Layout with Input Filter



MAEU01-HI Series meet EN 55032 Radiated Emissions Class A without external components.

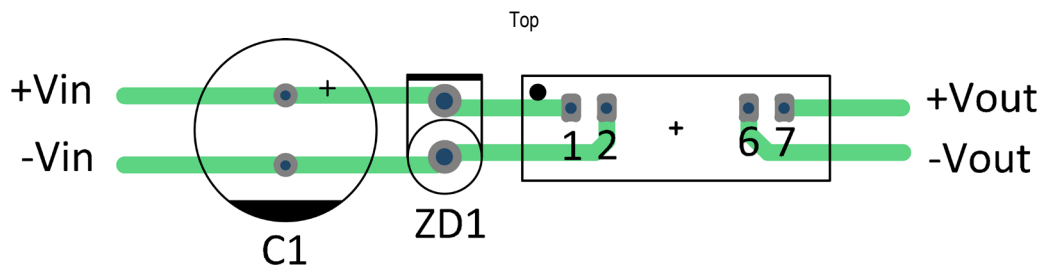
MAEU01-HI Series - EMC Notes

External Filter meets EMS EFT & Surge EN 55035, criteria A



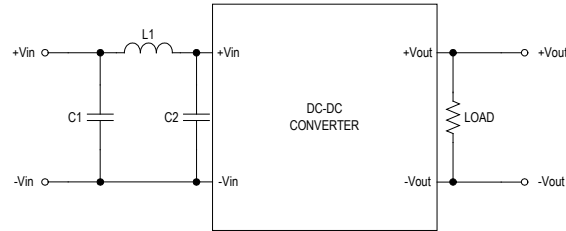
Model	Criteria A	
	C1	ZD1
MAEU01-05XXXHI	330 μ F/25V CHEMI-CON KY Series	1.5KE7.5CA (TVS Diode)
MAEU01-12XXXHI	1800 μ F/25V CHEMI-CON KY Series	---
MAEU01-24XXXHI	470 μ F/50V CHEMI-CON KY Series	---

Recommended PCB Layout with Input Filter



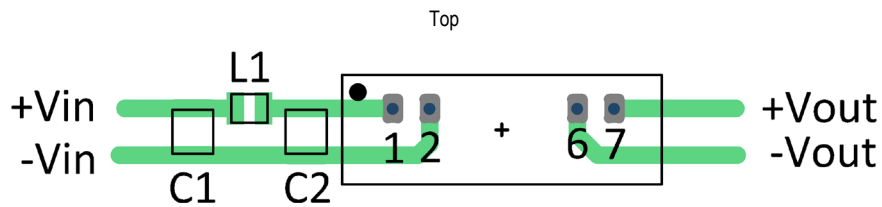
MAEU01-HI Series - EMC Notes

External Filter meets EMI Conducted EN 55032, class B



Model	Class B	
	C1, C2	L1
MAEU01-HI Series	47 μ F/50V 1210	4.7 μ H 74404024047

Recommended PCB Layout with Input Filter



MAEU01-HI Series meet EN 55032 Radiated Emissions Class B without external components.