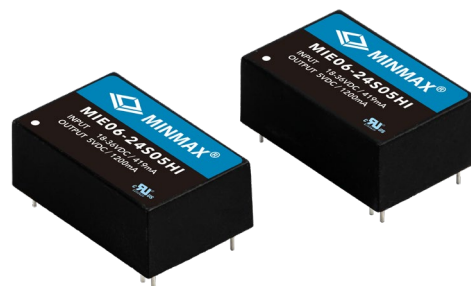


**FEATURES**

- ▶ Industrial Standard DIP-24 Package
- ▶ Wide 2:1 Input Voltage Range
- ▶ Fully Regulated Output Voltage
- ▶ Ultra-high I/O Isolation 9000VDC with Reinforced Insulation, rate for 1000Vrms Working Voltage
- ▶ Operating Ambient Temp. Range -40°C to +95°C
- ▶ No Min. Load Requirement
- ▶ Under-Voltage, Overload/Voltage and Short Circuit Protection
- ▶ Conducted EMI EN 55032 Class A Approved
- ▶ UL/cUL/IEC/EN 62368-1(60950-1) Safety Approval & CE Marking


**PRODUCT OVERVIEW**

The MINMAX MIE06-HI series is a range of high performance 6W DC-DC converter within encapsulated DIP-24 package which specifically design for high isolation applications where reinforced insulation and high working voltage are required. There are 18 models available for input voltage of 12, 24, 48VDC with wide 2:1 input range and fixed output voltage. The I/O isolation is specified for 9000VDC with reinforced insulation, which rated for 1000Vrms working voltage. Further features include under-voltage, overload, over voltage, short circuit protection, no min. load requirement, EMI conduction EN 55032 Class A approved, low I/O capacitance 40pF max. and operating ambient temp. range by -40°C to 95°C by high efficiency up to 89%. MIE06-HI series conform to UL/cUL/IEC/EN 62368-1(60950-1) safety approvals. The MIE06-HI series offer a superior solution for demanding application in requesting a certified supplementary.

**Model Selection Guide**

Model Number	Input Voltage (Range) VDC	Output Voltage VDC	Output Current Max. mA	Input Current		Over Voltage Protection VDC	Max. capacitive Load μF	Efficiency (typ.) @Max. Load %
				@Max. Load mA(typ.)	@No Load mA(typ.)			
MIE06-12S05HI	12 (9 ~ 18)	5	1200	602	10	6.2	1500	83
MIE06-12S12HI		12	500	581		15	260	86
MIE06-12S15HI		15	400	581		18	210	86
MIE06-12S24HI		24	250	581		30	75	86
MIE06-12D12HI		±12	±250	575		±15	150#	87
MIE06-12D15HI		±15	±200	575		±18	110#	87
MIE06-24S05HI		24 (18 ~ 36)	5	1200		301	8	6.2
MIE06-24S12HI	12		500	291	15	260		86
MIE06-24S15HI	15		400	287	18	210		87
MIE06-24S24HI	24		250	294	30	75		85
MIE06-24D12HI	±12		±250	291	±15	150#		86
MIE06-24D15HI	±15		±200	287	±18	110#		87
MIE06-48S05HI	48 (36 ~ 75)		5	1200	151	5		6.2
MIE06-48S12HI		12	500	145	15		260	86
MIE06-48S15HI		15	400	140	18		210	89
MIE06-48S24HI		24	250	145	30		75	86
MIE06-48D12HI		±12	±250	144	±15		150#	87
MIE06-48D15HI		±15	±200	142	±18		110#	88

For each output

Input Specifications						
Parameter	Conditions / Model	Min.	Typ.	Max.	Unit	
Input Surge Voltage (1 sec. max.)	12V Input Models	-0.7	---	25	VDC	
	24V Input Models	-0.7	---	50		
	48V Input Models	-0.7	---	100		
Start-Up Threshold Voltage	12V Input Models	---	---	9		
	24V Input Models	---	---	18		
	48V Input Models	---	---	36		
Under Voltage Shutdown	12V Input Models	---	8	---		
	24V Input Models	---	16	---		
	48V Input Models	---	34	---		
Start Up Time (Power On)	Nominal Vin and Constant Resistive Load	---	---	30	ms	
Input Filter	All Models	Internal Pi Type				

Output Specifications						
Parameter	Conditions	Min.	Typ.	Max.	Unit	
Output Voltage Setting Accuracy		---	---	±1.0	%Vnom.	
Output Voltage Balance	Dual Output, Balanced Loads	---	±0.5	±2.0	%	
Line Regulation	Vin=Min. to Max. @Full Load	---	---	±0.5	%	
Load Regulation	Io=0% to 100%	Single Output	---	---	±0.5 %	
		Dual Output	---	---	±1.0 %	
Load Cross Regulation (Dual Output)	Asymmetrical Load 25%/100% Full Load	---	---	±5.0	%	
Minimum Load	No minimum Load Requirement					
Ripple & Noise	0-20 MHz Bandwidth	Measured with a 1μF MLCC	---	70	mV <sub>P-P</sub>	
Transient Recovery Time	25% Load Step Change	---	300	---	μsec	
Transient Response Deviation		---	±3	±5	%	
Temperature Coefficient		---	±0.01	±0.02	%/ <sup>o</sup> C	
Over Load Protection		---	150	---	%	
Short Circuit Protection	Continuous, Automatic Recovery (Hiccup Mode 0.5Hz typ.)					

Isolation, Safety Standards						
Parameter	Conditions	Min.	Typ.	Max.	Unit	
I/O Isolation Voltage	60 Seconds	5000	---	---	VAC	
	Reinforced insulation, rated for 1000Vrms working voltage					
	Tested for 1 second	9000	---	---	VDC	
I/O Isolation Resistance	500 VDC	10	---	---	GΩ	
I/O Isolation Capacitance	100kHz, 1V	---	---	40	pF	
Safety Approvals	UL/cUL 60950-1 recognition(UL certificate), IEC/EN 60950-1(CB-report)					
	UL/cUL 62368-1 recognition(UL certificate), IEC/EN 62368-1(CB-report)					

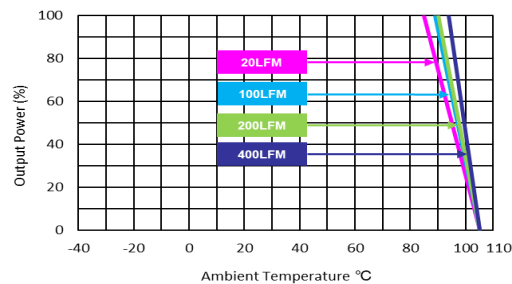
General Specifications						
Parameter	Conditions	Min.	Typ.	Max.	Unit	
Switching Frequency		---	330	---	kHz	
MTBF(calculated)	MIL-HDBK-217F@25°C, Ground Benign	4,612,491	---	---	Hours	

**EMC Specifications**

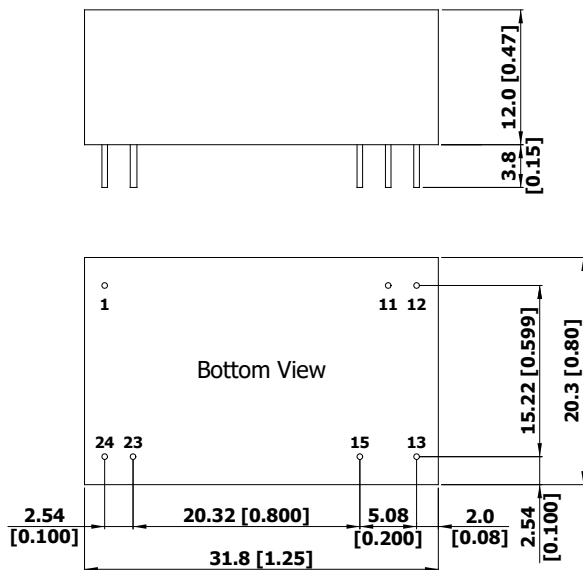
Parameter	Standards & Level		Performance	
EMI <sub>(s)</sub>	Conduction	EN 55032	Without external components	
	Radiation		With external components	
EMS <sub>(s)</sub>	EN 55024		A	
	ESD	Direct discharge		Indirect discharge HCP & VCP
		EN 61000-4-2 Air ± 15kV		Contact ± 8kV
	Radiated immunity	EN 61000-4-3 10V/m		A
	Fast transient	EN 61000-4-4 ±2kV		A
	Surge	EN 61000-4-5 ±2kV		A
	Conducted immunity	EN 61000-4-6 10Vrms		A
PFMF	EN 61000-4-8 100A/m		A	

**Environmental Specifications**

Parameter	Min.	Max.	Unit
Operating Ambient Temperature Range (See Power Derating Curve)	-40	+95	°C
Case Temperature	---	+105	°C
Storage Temperature Range	-50	+125	°C
Humidity (non condensing)	---	95	% rel. H
Lead Temperature (1.5mm from case for 10Sec.)	---	260	°C

**Power Derating Curve**

**Notes**

- Specifications typical at Ta=+25°C, resistive load, nominal input voltage and rated output current unless otherwise noted.
- Transient recovery time is measured to within 1% error band for a step change in output load of 75% to 100%.
- We recommend to protect the converter by a slow blow fuse in the input supply line.
- Other input and output voltage may be available, please contact MINMAX.
- The external components might be required to meet EMI/EMS standard for some of test items. Please contact MINMAX for the solution in detail.
- Specifications are subject to change without notice.

**Package Specifications**
**Mechanical Dimensions**

**Pin Connections**

Pin	Single Output	Dual Output	Diameter mm (inches)
1	+Vin	+Vin	Ø 0.6 [0.02]
11	No Pin	Common	Ø 0.6 [0.02]
12	-Vout	No Pin	Ø 0.6 [0.02]
13	+Vout	-Vout	Ø 0.6 [0.02]
15	No Pin	+Vout	Ø 0.6 [0.02]
23	-Vin	-Vin	Ø 0.6 [0.02]
24	-Vin	-Vin	Ø 0.6 [0.02]

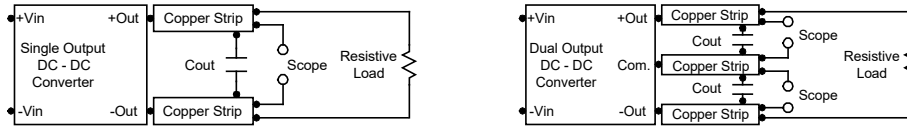
- ▶ All dimensions in mm (inches)
- ▶ Tolerance: X.X±0.5 (X.XX±0.02)  
X.XX±0.25 (X.XXX±0.01)
- ▶ Pin diameter tolerance: X.X±0.05 (X.XX±0.002)

**Physical Characteristics**

Case Size	: 31.8x20.3x12.0mm (1.25x0.80x0.47 inches)
Case Material	: Plastic resin (flammability to UL 94V-0 rated)
Pin Material	: Copper Alloy
Weight	: 15.5g

**Test Setup**
**Peak-to-Peak Output Noise Measurement Test**

Refer to the output specifications or add 4.7 $\mu$ F capacitor if the output specifications undefine Cout. Scope measurement should be made by using a BNC socket, measurement bandwidth is 0-20 MHz. Position the load between 50 mm and 75 mm from the DC-DC Converter.


**Technical Notes**
**Overload Protection**

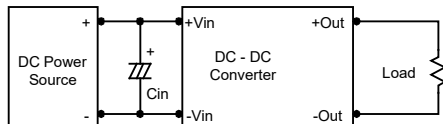
To provide hiccup mode protection in a fault (output overload) condition, the unit is equipped with internal current limiting circuitry and can endure overload for an unlimited duration.

**Overvoltage Protection**

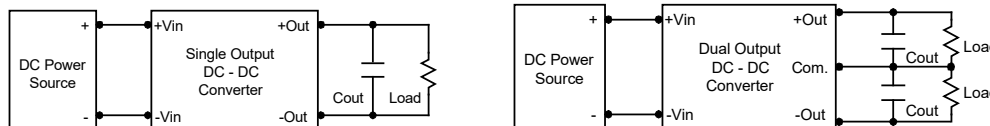
The output overvoltage clamp consists of control circuitry, which is independent of the primary regulation loop, that monitors the voltage on the output terminals. The control loop of the clamp has a higher voltage set point than the primary loop. This provides a redundant voltage control that reduces the risk of output overvoltage. The OVP level can be found in the output data.

**Input Source Impedance**

The power module should be connected to a low ac-impedance input source. Highly inductive source impedances can affect the stability of the power module. In applications where power is supplied over long lines and output loading is high, it may be necessary to use a capacitor on the input to insure startup. By using a good quality low Equivalent Series Resistance (ESR < 1.0 $\Omega$  at 100 kHz) capacitor of a 10 $\mu$ F for the 12V input devices and a 4.7 $\mu$ F for the 24V input devices and a 2.2 $\mu$ F for the 48V devices, capacitor mounted close to the power module helps ensure stability of the unit.


**Output Ripple Reduction**

A good quality low ESR capacitor placed as close as practicable across the load will give the best ripple and noise performance. To reduce output ripple, it is recommended to use 1 $\mu$ F capacitors at the output.


**Maximum Capacitive Load**

The MIE06-HI series has limitation of maximum connected capacitance on the output. The power module may operate in current limiting mode during start-up, affecting the ramp-up and the startup time. Connect capacitors at the point of load for best performance. The maximum capacitance can be found in the data sheet.

**Thermal Considerations**

Many conditions affect the thermal performance of the power module, such as orientation, airflow over the module and board spacing. To avoid exceeding the maximum temperature rating of the components inside the power module, the case temperature must be kept below 105 $^{\circ}$ C. The derating curves are determined from measurements obtained in a test setup.

