

FEATURES

- ▶ Ultra-compact SMD-Package
- ▶ Reinforced Insulation rated for 300VAC Working Voltage
- ▶ I/O-isolation 4000VACrms
- ▶ Industrial & Medical Safety Approval
- ▶ Operating Temp. Range -25°C to +80°C
- ▶ Semi-regulated Output Voltage
- ▶ Qualified for leadfree Reflow Solder Process according IPC-J-STD-020D
- ▶ Tape & Reel Package available
- ▶ 3 Years Product Warranty



PRODUCT OVERVIEW

The MINMAX MSHU100 series is a new range of 2W DC/DC-converter modules providing a very high I/O-isolation voltage of 4000 VAC. The product comes in a small SMD-package. There are 15 models available with 5V, 12V or 24VDC input and single-or dual-output voltages.

The MSHU100 DC/DC converters offer an economical solution for many applications in instrumentation, industrial controls, medical equipment and everywhere where a certified supplementary- or reinforced insulation system is required to comply with requested safety standards.

Model Selection Guide

Model Number	Input Voltage (Range) VDC	Output Voltage VDC	Output Current		Input Current		Load Regulation % (max.)	Max. capacitive Load uF	Efficiency (typ.)
			Max.	Min.	@Max. Load	@No Load			@Max. Load
			mA	mA	mA(typ.)	mA(typ.)			%
MSHU102	5 (4.5 ~ 5.5)	5	400	8	606	90	12	330	66
MSHU104		12	165	3	600				66
MSHU105		15	133	2.5	605				66
MSHU108		±12	±83	±1.5	553				72
MSHU109		±15	±66	±1	542				73
MSHU112	12 (10.8 ~ 13.2)	5	400	8	253	40	12	330	66
MSHU114		12	165	3	250				66
MSHU115		15	133	2.5	252				66
MSHU118		±12	±83	±1.5	224				74
MSHU119		±15	±66	±1	220				75
MSHU122	24 (21.6 ~ 26.4)	5	400	8	126	30	12	330	66
MSHU124		12	165	3	125				66
MSHU125		15	133	2.5	126				66
MSHU128		±12	±83	±1.5	112				74
MSHU129		±15	±66	±1	110				75

For each output

Input Specifications

Parameter	Model	Min.	Typ.	Max.	Unit
Input Voltage Range	5V Input Models	4.5	5	5.5	VDC
	12V Input Models	10.8	12	13.2	
	24V Input Models	21.6	24	26.4	
Input Surge Voltage (1 sec. max.)	5V Input Models	-0.7	---	9	VDC
	12V Input Models	-0.7	---	18	
	24V Input Models	-0.7	---	30	
Reverse Polarity Input Current	All Models	---	---	0.3	A
Input Filter		Internal Capacitor			
Internal Power Dissipation		---	---	650	mW

Output Specifications

Parameter	Conditions	Min.	Typ.	Max.	Unit
Output Voltage Accuracy		---	±2.0	±4.0	%
Output Voltage Balance	Dual Output, Balanced Loads	---	±0.1	±1.0	%
Line Regulation	Vin=Min. to Max.	---	±1.2	±1.5	%
Load Regulation	Io=20% to 100%		See Model Selection Guide		
Ripple & Noise (20MHz)		---	100	150	mV P-P
Ripple & Noise (20MHz)	Over Line, Load & Temp.	---	---	200	mV P-P
Ripple & Noise (20MHz)		---	---	15	mV rms
Temperature Coefficient		---	±0.01	±0.02	%/°C
Short Circuit Protection			0.5 Second Max.		

Isolation, Safety Standards

Parameter	Conditions	Min.	Typ.	Max.	Unit
I/O Isolation Voltage (rated)	60 Seconds	4000	---	---	VACrms
I/O Isolation Test Voltage	Flash tested for 1 Second	6000	---	---	V _{PK}
Leakage Current	240VAC, 60Hz	---	---	2	uA
I/O Isolation Resistance	500 VDC	10	---	---	GΩ
I/O Isolation Capacitance	100KHz, 1V	---	15	20	pF
Safety Standards	cUL/UL60950-1, CSA C22.2 No. 60950-1-03 UL60601-1, CSA C22.2 No. 601-1, IEC/EN 60950-1, IEC/EN 60601-1				
Approvals	IEC60950-1 CB report, cUL/UL 60950-1 certificate UL60601-1 UL certificate				

General Specifications

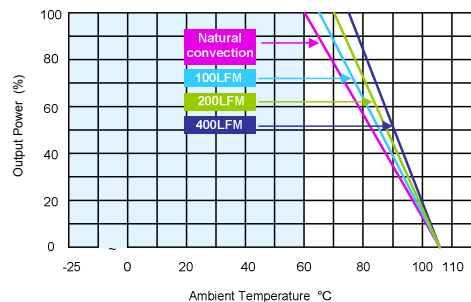
Parameter	Conditions	Min.	Typ.	Max.	Unit
Switching Frequency		50	80	100	KHz
MTBF (calculated)	MIL-HDBK-217F@25°C, Ground Benign	2,000,000	----	----	Hours
Moisture Sensitivity Level (MSL)	IPC/JEDEC J-STD-020D			Level 2	

Input Fuse

5V Input Models	12V Input Models	24V Input Models
1000mA Slow-Blow Type	500mA Slow-Blow Type	200mA Slow-Blow Type

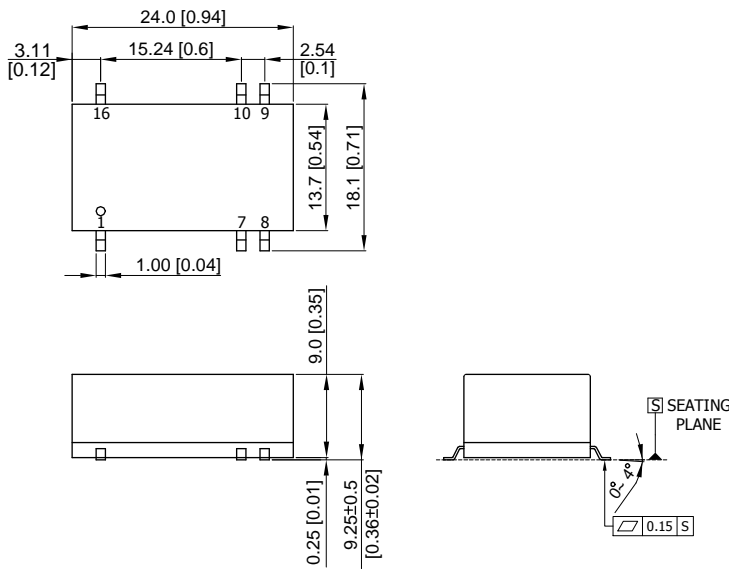
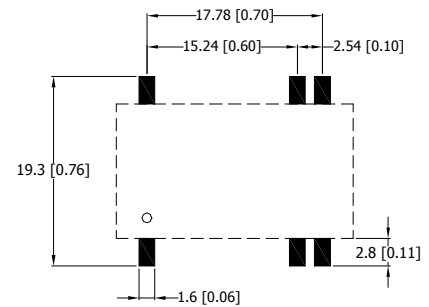
Environmental Specifications

Parameter	Conditions	Min.	Max.	Unit
Operating Temperature Range (with Derating)	Ambient	-25	+80	°C
Case Temperature		---	+90	°C
Storage Temperature Range		-50	+125	°C
Humidity (non condensing)		---	95	% rel. H
Cooling	Free-Air convection			
Lead Temperature (1.5mm from case for 10Sec.)		---	260	°C

Power Derating Curve


Notes

- 1 Specifications typical at Ta=+25°C, resistive load, nominal input voltage and rated output current unless otherwise noted.
- 2 Ripple & Noise measurement bandwidth is 0-20MHz.
- 3 These power converters require a minimum output loading to maintain specified regulation, operation under no-load conditions will not damage these modules; however they may not meet all specifications listed.
- 4 All DC/DC converters should be externally fused at the front end for protection.
- 5 Other input and output voltage may be available, please contact factory.
- 6 Specifications subject to change without notice.
- 7 It is not recommended to use water-washing process on SMT units.

Package Specifications
Mechanical Dimensions

Connecting Pin Patterns


- ▶ All dimensions in mm (inches)
- ▶ Tolerance: X.X±0.25 (X.XX±0.01)
X.XX±0.13 (X.XXX±0.005)
- ▶ Pins ±0.05 (±0.002)

Pin Connections

Pin	Single Output	Dual Output
1	-Vin	-Vin
7	NC	NC
8	NC	Common
9	+Vout	+Vout
10	-Vout	-Vout
16	+Vin	+Vin

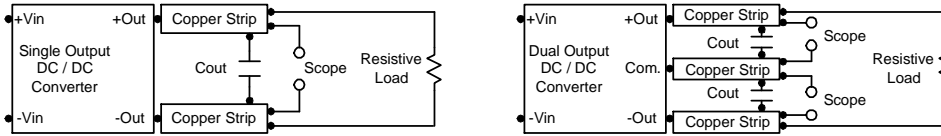
NC: No Connection

Physical Characteristics

Case Size	: 24.0x13.7x9.0mm (0.94x0.54x0.35 Inches)
Case Material	: Non-Conductive Black Plastic (flammability to UL 94V-0 rated)
Weight	: 3.75g

Test Configurations
Peak-to-Peak Output Noise Measurement Test

Use a Cout 0.47uF ceramic capacitor. Scope measurement should be made by using a BNC socket, measurement bandwidth is 0-20 MHz. Position the load between 50 mm and 75 mm from the DC/DC Converter.

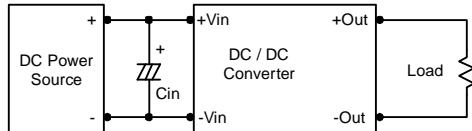

Design & Feature Considerations
Maximum Capacitive Load

The MSHU100 series has limitation of maximum connected capacitance at the output. The power module may be operated in current limiting mode during start-up, affecting the ramp-up and the startup time. For optimum performance we recommend 100uF maximum capacitive load for dual outputs and 330uF capacitive load for single outputs. The maximum capacitance can be found in the data sheet.

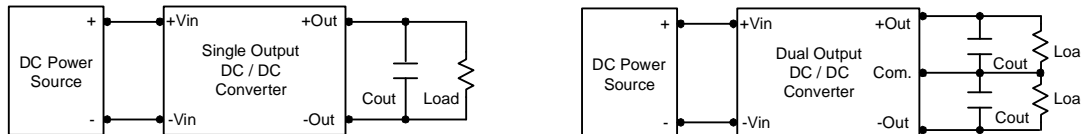
Input Source Impedance

The power module should be connected to a low ac-impedance input source. Highly inductive source impedances can affect the stability of the power module. In applications where power is supplied over long lines and output loading is high, it may be necessary to use a capacitor at the input to ensure startup.

Capacitor mounted close to the power module helps ensure stability of the unit, it is recommended to use a good quality low Equivalent Series Resistance (ESR < 1.0Ω at 100 KHz) capacitor of a 2.2uF for the 5V input devices, a 1.0uF for the 12V input devices and a 0.47uF for the 24V input devices.


Output Ripple Reduction

A good quality low ESR capacitor placed as close as practicable across the load will give the best ripple and noise performance. To reduce output ripple, it is recommended to use 3.3uF capacitors at the output.


Thermal Considerations

Many conditions affect the thermal performance of the power module, such as orientation, airflow over the module and board spacing. To avoid exceeding the maximum temperature rating of the components inside the power module, the case temperature must be kept below 90°C. The derating curves are determined from measurements obtained in a test setup.

