

FEATURES

- ▶ Very Compact SMD Package
- ▶ Ultra-wide 4:1 Input Voltage Range
- ▶ Fully Regulated Output Voltage
- ▶ I/O Isolation 1500VDC
- ▶ Operating Ambient Temp. Range -40°C to +80°C
- ▶ No Min. Load Requirement
- ▶ Under-voltage, Overload and Short Circuit Protection
- ▶ EMI Emission EN 55032 Class A & FCC Level A Approved
- ▶ Remote On/Off Control
- ▶ Water-washable Process Available(option)
- ▶ Qualified for Lead-free Reflow Solder Process According to IPC/JEDEC J-STD-020D.1
- ▶ Tape & Reel Package Available
- ▶ UL/cUL/IEC/EN 62368-1 (60950-1) Safety Approval & CE Marking


PRODUCT OVERVIEW

The MINMAX MSCWI02 series is a new range of isolated 2W DC-DC converter modules-features ultra-wide input voltage ranges and fully regulated output voltage. The product come in a SMD package with very small footprint occupying only 0.3 in² (0.2 cm²) of PCB space. The converters are qualified to withstand lead free reflow processes according to IPC J-STD-020D.1 standard. High efficiency allows operating temperatures range of -40°C to 80°C. Further features include under-voltage protection, overload protection, short circuit protection, no min. load requirement and remote ON/OFF. These DC-DC converters offer an economical solution for many space critical applications in battery-powered equipment, instrumentation, distributed power architectures in communication and industrial electronics.

Model Selection Guide

Model Number	Input Voltage (Range) VDC	Output Voltage VDC	Output Current		Input Current		Max. capacitive Load μF	Efficiency (typ.) @Max. Load
			Max.		@Max. Load	@No Load		
			mA		mA(typ.)	mA(typ.)		%
MSCWI02-05S05	5 (4.5 ~ 12)	5	400		500	40	1680	80
MSCWI02-05S12		12	167		477		820	84
MSCWI02-05S15		15	134		484		680	83
MSCWI02-05S24		24	83		474		390	84
MSCWI02-05D12		±12	±83		480		470#	83
MSCWI02-05D15		±15	±67		490		330#	82
MSCWI02-24S05	24 (9 ~ 36)	5	400		104	20	1680	80
MSCWI02-24S12		12	167		99		820	84
MSCWI02-24S15		15	134		99		680	85
MSCWI02-24S24		24	83		98		390	85
MSCWI02-24D12		±12	±83		100		470#	83
MSCWI02-24D15		±15	±67		101		330#	83
MSCWI02-48S05	48 (18 ~ 75)	5	400		53	10	1680	78
MSCWI02-48S12		12	167		51		820	82
MSCWI02-48S15		15	134		51		680	83
MSCWI02-48S24		24	83		49		390	84
MSCWI02-48D12		±12	±83		51		470#	82
MSCWI02-48D15		±15	±67		51		330#	82

For each output

Input Specifications					
Parameter	Conditions / Model	Min.	Typ.	Max.	Unit
Input Surge Voltage (1 sec. max.)	5V Input Models	-0.7	---	15	VDC
	24V Input Models	-0.7	---	50	
	48V Input Models	-0.7	---	100	
Start-Up Threshold Voltage	5V Input Models	---	---	4.5	
	24V Input Models	---	---	9	
	48V Input Models	---	---	18	
Start-Up Time (Power On)	Nominal Vin and Constant Resistive Load	---	---	30	ms
Short Circuit Input Power	All Models	---	---	1500	mW
Input Filter		Internal Pi Type			

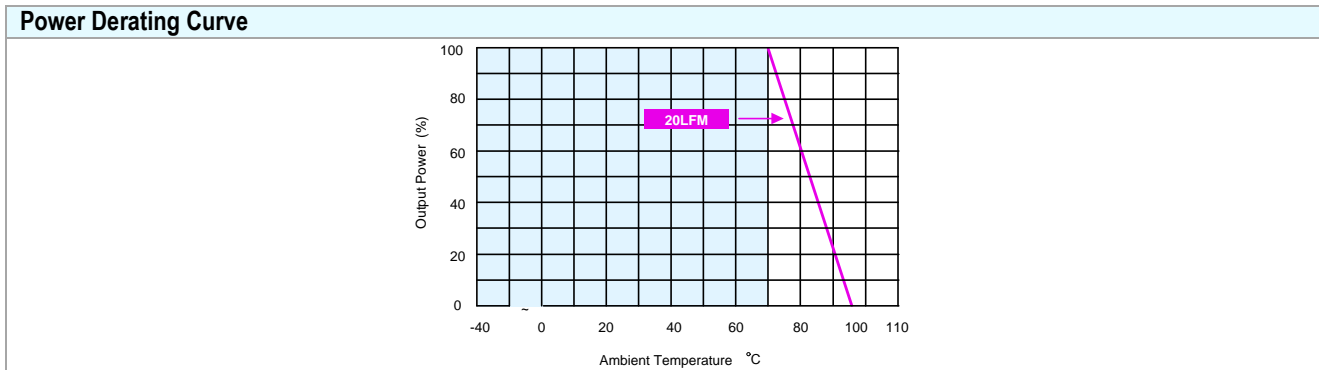
Remote On/Off Specifications					
Parameter	Conditions	Min.	Typ.	Max.	Unit
Converter On	Open or high impedance				
Converter Off	2~4mA current applied via 1Kohm resistor				
Standby Input Current	Supply Off & Nominal Vin	---	2.5	---	mA

Output Specifications					
Parameter	Conditions	Min.	Typ.	Max.	Unit
Output Voltage Setting Accuracy		---	---	±1.0	%Vnom.
Output Voltage Balance	Dual Output, Balanced Loads	---	---	±2.0	%
Line Regulation	Vin=Min. to Max. @Full Load	---	---	±0.5	%
Load Regulation	Io=0% to 100%	---	---	±1.0	%
Load Cross Regulation (Dual Output)	Asymmetrical Load 25/100% Full Load	---	---	±5.0	%
Minimum Load	No minimum Load Requirement				
Ripple & Noise	0-20 MHz Bandwidth	---	---	50	mV _{P-P}
Transient Recovery Time	25% Load Step Change	---	250	---	μsec
Transient Response Deviation		---	±3	±5	%
Temperature Coefficient		---	---	±0.02	%/°C
Over Load Protection	Foldback	---	160	---	%
Short Circuit Protection	Continuous, Automatic Recovery				

General Specifications					
Parameter	Conditions	Min.	Typ.	Max.	Unit
I/O Isolation Voltage	60 Seconds	1500	---	---	VDC
	1 Second	1800	---	---	VDC
I/O Isolation Resistance	500 VDC	1000	---	---	MΩ
I/O Isolation Capacitance	100kHz, 1V	---	500	---	pF
Switching Frequency		100	---	---	kHz
MTBF(calculated)	MIL-HDBK-217F@25°C, Ground Benign	6,432,000	---	---	Hours
Moisture Sensitivity Level (MSL)	IPC/JEDEC J-STD-020D.1	Level 2			
Safety Approvals	UL/cUL 60950-1 recognition (UL certificate), IEC/EN 60950-1(CB-report)				
	UL/cUL 62368-1 recognition (UL certificate), IEC/EN 62368-1(CB-report)				

Environmental Specifications			
Parameter	Min.	Max.	Unit
Operating Ambient Temperature Range (See Power Derating Curve)	-40	+80	°C
Case Temperature	---	+95	°C
Storage Temperature	-55	+125	°C
Humidity (non condensing)	---	95	% rel. H
Lead-free Reflow Solder Process	IPC/JEDEC J-STD-020D.1		

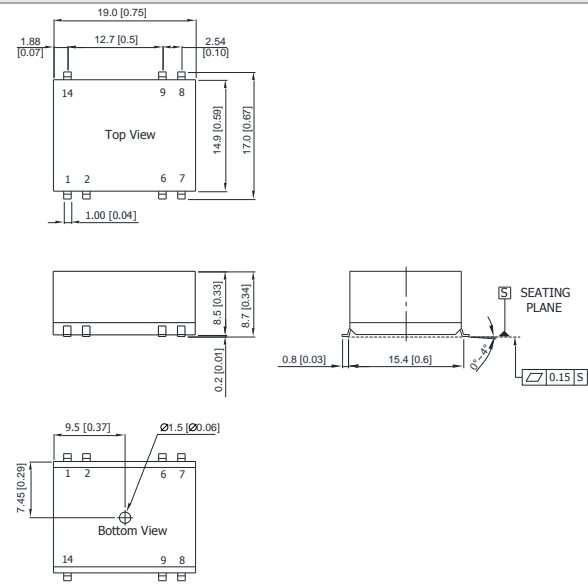
EMC Specifications			
Parameter	Standards & Level		Performance
EMI	Conduction & Radiation	EN 55032, FCC part 15	Class A
EMS	EN 55024		
	ESD	EN 61000-4-2 Air \pm 8kV, Contact \pm 6kV	A
	Radiated immunity	EN 61000-4-3 10V/m	A
	Fast transient ⁽⁴⁾	EN 61000-4-4 \pm 2kV	A
	Surge ⁽⁴⁾	EN 61000-4-5 \pm 1kV	A
	Conducted immunity	EN 61000-4-6 10Vrms	A
	PFMF	EN 61000-4-8 3A/m	A



- Notes**
- Specifications typical at Ta=+25°C, resistive load, nominal input voltage, rated output current unless otherwise noted.
 - We recommend to protect the converter by a slow blow fuse in the input supply line.
 - Other input and output voltage may be available, please contact factory.
 - To meet EN 61000-4-4 & EN 61000-4-5 an external capacitor across the input pins is required. Suggested capacitor:220 μ F/100V.
 - That "natural convection" is about 20LFM but is not equal to still air (0 LFM).
 - Specifications are subject to change without notice.

Package Specifications

Mechanical Dimensions

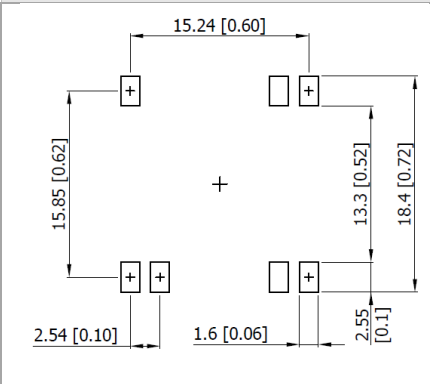


Top View dimensions: 19.0 [0.75], 12.7 [0.5], 2.54 [0.10], 1.98 [0.07], 14.9 [0.59], 17.0 [0.67], 1.00 [0.04], 14, 9, 8, 1, 2, 6, 7.

Bottom View dimensions: 9.5 [0.37], 7.45 [0.29], 1, 2, 6, 7, 14, 9, 8, $\phi 1.5$ [0.06].

Side View dimensions: 8.5 [0.33], 8.7 [0.34], 0.2 [0.01], 0.8 [0.03], 15.4 [0.6], SEATING PLANE, 0.15 [0.006].

Connecting Pin Patterns



Pin patterns dimensions: 15.24 [0.60], 15.85 [0.62], 13.3 [0.52], 18.4 [0.72], 2.54 [0.10], 1.6 [0.06], 2.55 [0.1].

- ▶ All dimensions in mm (inches)
- ▶ Tolerance: X.X±0.5 (X.XX±0.02)
X.XX±0.25 (X.XXX±0.01)
- ▶ Pins ±0.05(±0.002)

Pin Connections		
Pin	Single Output	Dual Output
1	-Vin	-Vin
2	Remote On/Off	Remote On/Off
6	NC	Common
7	NC	-Vout
8	+Vout	+Vout
9	-Vout	Common
14	+Vin	+Vin

NC: No Connection

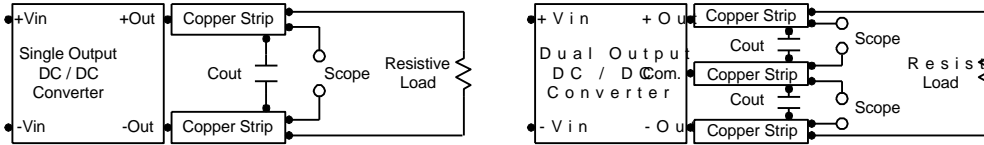
Physical Characteristics	
Case Size	: 19.0x14.9x8.5mm (0.75x0.59x0.33 inches)
Case Material	: Non-Conductive Black Plastic (flammability to UL 94V-0 rated)
Pin Material	: Tinned Copper
Weight	: 3.5g

Order Code Table	
Standard	For water-washable process
MSCWI02-05S05	MSCWI02-05S05-W
MSCWI02-05S12	MSCWI02-05S12-W
MSCWI02-05S15	MSCWI02-05S15-W
MSCWI02-05S24	MSCWI02-05S24-W
MSCWI02-05D12	MSCWI02-05D12-W
MSCWI02-05D15	MSCWI02-05D15-W
MSCWI02-24S05	MSCWI02-24S05-W
MSCWI02-24S12	MSCWI02-24S12-W
MSCWI02-24S15	MSCWI02-24S15-W
MSCWI02-24S24	MSCWI02-24S24-W
MSCWI02-24D12	MSCWI02-24D12-W
MSCWI02-24D15	MSCWI02-24D15-W
MSCWI02-48S05	MSCWI02-48S05-W
MSCWI02-48S12	MSCWI02-48S12-W
MSCWI02-48S15	MSCWI02-48S15-W
MSCWI02-48S24	MSCWI02-48S24-W
MSCWI02-48D12	MSCWI02-48D12-W
MSCWI02-48D15	MSCWI02-48D15-W

Test Setup

Peak-to-Peak Output Noise Measurement Test

Refer to the output specifications or add 4.7 μ F capacitor if the output specifications undefine C_{out} . Scope measurement should be made by using a BNC socket, measurement bandwidth is 0-20 MHz. Position the load between 50 mm and 75 mm from the DC-DC Converter.



Technical Notes

Remote On/Off

Only one type of remote ON/OFF control is available for MSCWI02. The module will turn on during the ON/OFF pin open or high impedance between ON/OFF pin and -Vin pin. The module will turn off if the ON/OFF pin is applied with a current of 2~4mA.

Maximum Capacitive Load

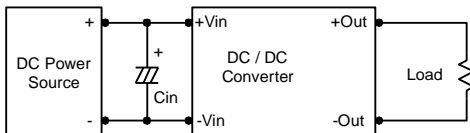
The MSCWI02 series has limitation of maximum connected capacitance at the output. The power module may be operated in current limiting mode during start-up, affecting the ramp-up and the startup time. The maximum capacitance can be found in the data sheet.

Overload Protection

To provide protection in a fault (output overload) condition, the unit is equipped with internal current limiting circuitry and can endure current limiting for an unlimited duration. At the point of current-limit inception, the unit shifts from voltage control to current control. The unit operates normally once the output current is brought back into its specified range.

Input Source Impedance

The power module should be connected to a low ac-impedance input source. Highly inductive source impedances can affect the stability of the power module. In applications where power is supplied over long lines and output loading is high, it may be necessary to use a capacitor at the input to ensure startup. Capacitor mounted close to the power module helps ensure stability of the unit, it is commended to use a good quality low Equivalent Series Resistance (ESR < 1.0 Ω at 100 kHz) capacitor of a 4.7 μ F for the 5V input devices and a 2.2 μ F for the 24V and 48V devices.



Output Ripple Reduction

A good quality low ESR capacitor placed as close as practicable across the load will give the best ripple and noise performance. To reduce output ripple, it is recommended to use 3.3 μ F capacitors at the output.



Thermal Considerations

Many conditions affect the thermal performance of the power module, such as orientation, airflow over the module and board spacing. To avoid exceeding the maximum temperature rating of the components inside the power module, the case temperature must be kept below 95°C. The derating curves are determined from measurements obtained in a test setup.

