

FEATURES

- ▶ Industrial Standard DIP-24 Package
- ▶ Wide 2:1 Input Voltage Range
- ▶ Fully Regulated Output Voltage
- ▶ I/O Isolation 4000VAC with Reinforced Insulation, rated for 1000Vrms Working Voltage
- ▶ Low Leakage Current < 2μA
- ▶ Operating Ambient Temp. Range -40°C to +75°C
- ▶ Under-Voltage, Overload and Short Circuit Protection
- ▶ Conducted EMI EN 55011/22 Class A & FCC Level A Approved
- ▶ Medical EMC Standard with 4th Edition of EMI EN 55011 and EMS EN 60601-1-2 Approved
- ▶ Medical Safety with 1xMOPP & 2xMOOP per 3rd Edition of IEC/EN 60601-1 & ANSI/AAMI ES60601-1 Approved
- ▶ UL/cUL/IEC/EN 60950-1 Safety Approval & CE Marking



PRODUCT OVERVIEW

The MINMAX MIHW3000 series is a range of high performance DC-DC converter modules with a reinforced insulation system. The I/O isolation voltage is specified for 4000VAC with reinforced insulation, which rated for 1000Vrms working voltage. The product comes in a small DIP-24 package. All 12 models features wide 2:1 input voltage range and fully regulated output voltage.

The MIHW3000 DC-DC converters offer an economical solution for demanding applications in industrial and medical instrumentation requesting a certified high supplementary or reinforced insulation system to comply with relative industrial or medical safety standards.

Model Selection Guide

Model Number	Input Voltage (Range)	Output Voltage	Output Current		Input Current		Reflected Ripple Current	Max. capacitive Load	Efficiency (typ.)
			Max.	Min.	@Max. Load	@No Load			@Max. Load
			mA	mA	mA(typ.)	mA(typ.)			%
MIHW3022	12 (9 ~ 18)	5	1000	200	570	30	60	1000	75
MIHW3023		12	500	100	641			470	78
MIHW3026		±12	±250	±50	641			220#	78
MIHW3027		±15	±200	±40	641			220#	78
MIHW3032	24 (18 ~ 36)	5	1000	200	278	20	30	1000	77
MIHW3033		12	500	100	313			470	80
MIHW3036		±12	±250	±50	313			220#	80
MIHW3037		±15	±200	±40	313			220#	80
MIHW3042	48 (36 ~ 75)	5	1000	200	139	10	15	1000	77
MIHW3043		12	500	100	156			470	80
MIHW3046		±12	±250	±50	156			220#	80
MIHW3047		±15	±200	±40	156			220#	80

For each output

Input Specifications					
Parameter	Model	Min.	Typ.	Max.	Unit
Input Surge Voltage (1 sec. max.)	12V Input Models	-0.7	---	25	VDC
	24V Input Models	-0.7	---	50	
	48V Input Models	-0.7	---	100	
Start-Up Threshold Voltage	12V Input Models	7	8	9	
	24V Input Models	13	15	18	
	48V Input Models	30	33	36	
Under Voltage Shutdown	12V Input Models	---	---	8.5	
	24V Input Models	---	---	16	
	48V Input Models	---	---	34	
Short Circuit Input Power		---	---	3000	mW
Input Filter	All Models	Internal Pi Type			
Conducted EMI		Compliance to EN 55011/22, class A and FCC part 15, class A			

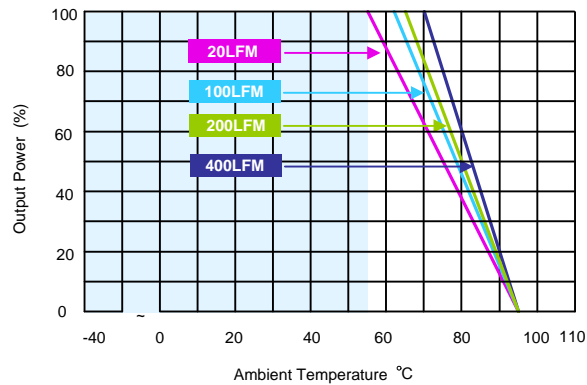
Output Specifications						
Parameter	Conditions / Model	Min.	Typ.	Max.	Unit	
Output Voltage Setting Accuracy		---	---	±1.0	%Vnom.	
Output Voltage Balance	Dual Output, Balanced Loads	---	±0.5	±2.0	%	
Line Regulation	Vin=Min. to Max. @Full Load	---	±0.3	±0.5	%	
Load Regulation	Io=25% to 100%	---	±0.5	±1.0	%	
Ripple & Noise	0-20 MHz Bandwidth	5V Output Models	---	75	100	mV _{P-P}
		Other Output Models	---	100	150	mV _{P-P}
Transient Recovery Time	25% Load Step Change	---	300	500	μsec	
Transient Response Deviation		---	±3	±6	%	
Temperature Coefficient		---	±0.02	±0.05	%/°C	
Over Load Protection	Foldback	120	150	---	%	
Short Circuit Protection	Continuous, Automatic Recovery					

Isolation, Safety Standards					
Parameter	Conditions	Min.	Typ.	Max.	Unit
I/O Isolation Voltage	60 Seconds Reinforced insulation, rated for 1000Vrms working voltage	4000	---	---	VACrms
Leakage Current	240VAC, 60Hz	---	---	2	μA
I/O Isolation Resistance	500 VDC	10	---	---	GΩ
I/O Isolation Capacitance	100kHz, 1V	---	7	13	pF
Safety Standards	UL/cUL 60950-1, CSA C22.2 No. 60950-1				
	ANSI/AAMI ES60601-1, CAN/CSA-C22.2 No. 60601-1				
Safety Approvals	IEC/EN 60950-1, IEC/EN 60601-1 3 rd Edition 1xMOPP & 2xMOOP				
	UL/cUL 60950-1 recognition (UL certificate), IEC/EN 60950-1 (CB-report)				
	ANSI/AAMI ES60601-1 1xMOPP & 2xMOOP recognition (UL certificate), IEC/EN 60601-1 3 rd Edition (CB-report)				

General Specifications					
Parameter	Conditions	Min.	Typ.	Max.	Unit
Switching Frequency		---	150	---	kHz
MTBF(calculated)	MIL-HDBK-217F@25°C, Ground Benign	1,000,000	---	---	Hours

Environmental Specifications

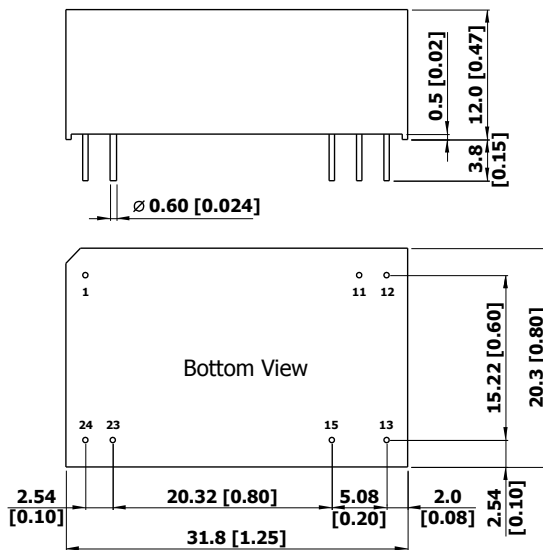
Parameter	Min.	Max.	Unit
Operating Ambient Temperature Range (See Power Derating Curve)	-40	+75	°C
Case Temperature	---	+95	°C
Storage Temperature Range	-50	+125	°C
Humidity (non condensing)	---	95	% rel. H
Lead Temperature (1.5mm from case for 10Sec.)	---	260	°C

Power Derating Curve

Notes

- 1 Specifications typical at Ta=+25°C, resistive load, nominal input voltage and rated output current unless otherwise noted.
- 2 Transient recovery time is measured to within 1% error band for a step change in output load of 75% to 100%.
- 3 These power converters require a minimum output loading to maintain specified regulation, operation under no-load conditions will not damage these modules; however, they may not meet all specifications listed.
- 4 We recommend to protect the converter by a slow blow fuse in the input supply line.
- 5 Other input and output voltage may be available, please contact factory.
- 6 Specifications are subject to change without notice.

Package Specifications

Mechanical Dimensions



Pin Connections

Pin	Single Output	Dual Output
1	+Vin	+Vin
11	No Pin	Common
12	-Vout	No Pin
13	+Vout	-Vout
15	No Pin	+Vout
23	-Vin	-Vin
24	-Vin	-Vin

- ▶ All dimensions in mm (inches)
- ▶ Tolerance: X.X±0.25 (X.XX±0.01)
X.XX±0.13 (X.XXX±0.005)
- ▶ Pin diameter $\varnothing 0.6 \pm 0.05$ (0.024±0.002)

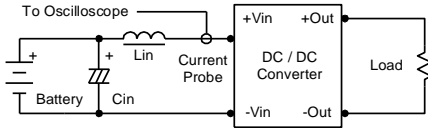
Physical Characteristics

Case Size	: 31.8x20.3x12.0mm (1.25x0.8x0.47 inches)
Case Material	: Non-Conductive Black Plastic (flammability to UL 94V-0 rated)
Pin Material	: Copper Alloy with Gold Plate Over Nickel Subplate
Weight	: 18g

Test Setup

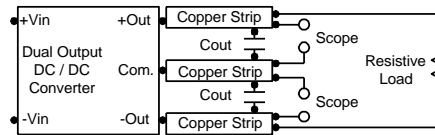
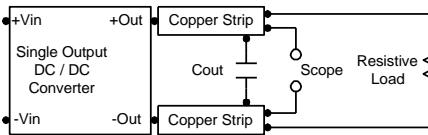
Input Reflected-Ripple Current Test Setup

Input reflected-ripple current is measured with an inductor L_{in} (4.7 μ H) and C_{in} (220 μ F, ESR < 1.0 Ω at 100 KHz) to simulate source impedance. Capacitor C_{in} offsets possible battery impedance. Current ripple is measured at the input terminals of the module, measurement bandwidth is 0-500 KHz.



Peak-to-Peak Output Noise Measurement Test

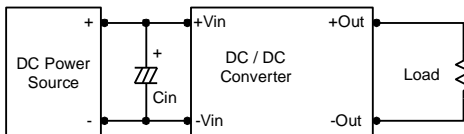
Use a C_{out} 0.47 μ F ceramic capacitor. Scope measurement should be made by using a BNC socket, measurement bandwidth is 0-20 MHz. Position the load between 50 mm and 75 mm from the DC-DC Converter.



Technical Notes

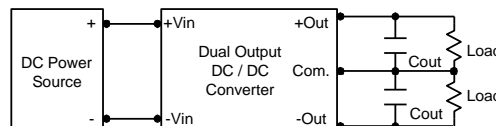
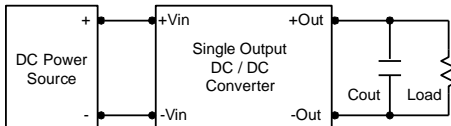
Input Source Impedance

The power module should be connected to a low ac-impedance input source. Highly inductive source impedances can affect the stability of the power module. In applications where power is supplied over long lines and output loading is high, it may be necessary to use a capacitor on the input to insure startup. By using a good quality low Equivalent Series Resistance (ESR < 1.0 Ω at 100 kHz) capacitor of a 10 μ F for the 12V input devices and a 4.7 μ F for the 24V input devices and a 2.2 μ F for the 48V devices, capacitor mounted close to the power module helps ensure stability of the unit.



Output Ripple Reduction

A good quality low ESR capacitor placed as close as practicable across the load will give the best ripple and noise performance. To reduce output ripple, it is recommended to use 3.3 μ F capacitors at the output.

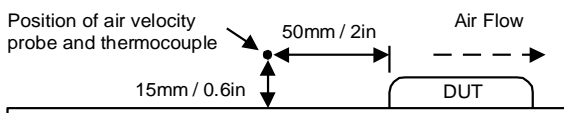


Maximum Capacitive Load

The MIHW3000 series has limitation of maximum connected capacitance on the output. The power module may operate in current limiting mode during start-up, affecting the ramp-up and the startup time. Connect capacitors at the point of load for best performance. The maximum capacitance can be found in the data sheet.

Thermal Considerations

Many conditions affect the thermal performance of the power module, such as orientation, airflow over the module and board spacing. To avoid exceeding the maximum temperature rating of the components inside the power module, the case temperature must be kept below 95°C. The derating curves are determined from measurements obtained in a test setup.



Design & Feature Considerations

Conducted and radiated emissions < A
with external coupling capacitor C_{io} =1 nF < B