

**FEATURES**

- ▶ Industrial Standard DIP-24 Package
- ▶ Ultra-wide Input Ranges 9-36VDC, 18-75VDC, 40-160VDC
- ▶ I/O Isolation 3000VAC with Reinforced Insulation
- ▶ Operating Ambient Temp. Range -40°C to +92°C
- ▶ No Min. Load Requirement
- ▶ Under-Voltage, Overload and Short Circuit Protection
- ▶ EMI Emission EN 55032/11 Class A & FCC Level A Approved
- ▶ Vibration and Shock/Bump Test EN 61373 Approved
- ▶ Cooling, Dry & Damp Heat Test IEC/EN 60068-2-1, 2, 30 Approved
- ▶ Railway EMC Standard EN 50121-3-2 Approved
- ▶ Railway Certified EN 50155 (IEC60571) Approved
- ▶ Fire Protection Test EN 45545-2 Approved
- ▶ UL/cUL/IEC/EN 62368-1 (60950-1) Safety Approval & CE Marking



**PRODUCT OVERVIEW**

The MINMAX MIZI03 series is a new range of railway approved 3W isolated DC-DC converter within encapsulated DIP-24 package which specifically design for railway applications. There are 15 models available for railway input voltage of either 24(9~36)VDC or 48(18~75)VDC or 72/110(40~160)VDC and tight output voltage regulation.

Further features include high I/O isolation rated for 3000VAC with reinforced insulation, overload, under-voltage and short circuit protection and conducted EMI EN 55032/11 class A & FCC level A approved as well. MIZI03 series conform to vibration and shock/bump test meets EN 61373, cooling, dry and damp heat test meets IEC/EN 60068-2-1,2,30 and railway EMC standard EN 50121-3-2 and complies also with Railway Certification EN 50155 (IEC60571) and EN 45545-2 for fire protection test.

MIZI03 series offer an highly reliable solution for critical applications in railway systems, battery-powered equipment, measure instrumentation and many critical applications.

**Model Selection Guide**

Model Number	Input Voltage (Range) VDC	Output Voltage VDC	Output Current	Input Current		Max. capacitive Load μF	Efficiency (typ.)
			Max. mA	@Max. Load mA(typ.)	@No Load mA(typ.)		@Max. Load %
MIZI03-24S05	24 (9 ~ 36)	5	600	156	9	680	80
MIZI03-24S12		12	250	149		330	84
MIZI03-24S15		15	200	147		220	85
MIZI03-24D12		±12	±125	151		220#	83
MIZI03-24D15		±15	±100	149		220#	84
MIZI03-48S05	48 (18 ~ 75)	5	600	78	5	680	80
MIZI03-48S12		12	250	75		330	83
MIZI03-48S15		15	200	74		220	84
MIZI03-48D12		±12	±125	75		220#	83
MIZI03-48D15		±15	±100	75		220#	83
MIZI03-110S05	110 (40 ~ 160)	5	600	34	3	680	80
MIZI03-110S12		12	250	32		330	84
MIZI03-110S15		15	200	32		220	84
MIZI03-110D12		±12	±125	33		220#	83
MIZI03-110D15		±15	±100	32		220#	85

# For each output

Input Specifications							
Parameter	Model	Min.	Typ.	Max.	Unit		
Input Surge Voltage (1 sec. max.)	24V Input Models	-0.7	---	50	VDC		
	48V Input Models	-0.7	---	100			
	110V Input Models	-0.7	---	170			
Start-Up Threshold Voltage	24V Input Models	---	---	9			
	48V Input Models	---	---	18			
	110V Input Models	---	---	40			
Under Voltage Shutdown	24V Input Models	---	7.5	---			
	48V Input Models	---	16	---			
	110V Input Models	---	37	---			
Start Up Time (Power On)	Nominal Vin and Constant Resistive Load	---	---	60	ms		
Input Filter	All Models	Internal Pi Type					

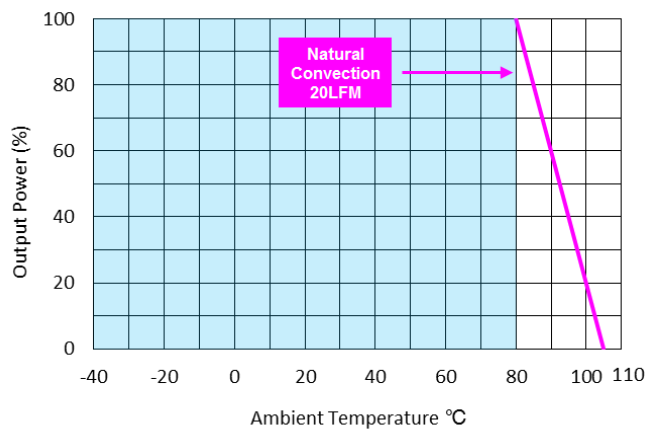
Output Specifications							
Parameter	Conditions		Min.	Typ.	Max.	Unit	
Output Voltage Setting Accuracy			---	---	±1.0	%	
Output Voltage Balance	Dual Output, Balanced Loads		---	±1	±2.0	%	
Line Regulation	Vin=Min. to Max. @Full Load		---	---	±0.5	%	
Load Regulation	Io=0% to 100%		---	---	±1.0	%	
Load Cross Regulation (Dual Output Models)	Asymmetrical Load 25/100% Full Load		---	---	±5.0	%	
Minimum Load	No minimum Load Requirement						
Ripple & Noise	0-20 MHz Bandwidth	5Vo	Measured with a 10µF/25V MLCC	---	50	---	mV <sub>P-P</sub>
		12V, 15V, ±12, ±15Vo		---	75	---	mV <sub>P-P</sub>
Transient Recovery Time	25% Load Step Change <sup>(2)</sup>		---	---	500	µsec	
Transient Response Deviation			---	±3	±5	%	
Temperature Coefficient			---	---	±0.02	%/°C	
Over Load Protection	Hiccup		---	150	---	%	
Short Circuit Protection	Hiccup Mode 0.7Hz typ., Automatic Recovery						

General Specifications						
Parameter	Conditions	Min.	Typ.	Max.	Unit	
I/O Isolation Voltage	Reinforced Insulation, Rated For 60 Seconds	3000	---	---	VACrms	
I/O Isolation Resistance	500 VDC	1000	---	---	MΩ	
I/O Isolation Capacitance	100KHz, 1V	---	1500	---	pF	
Switching Frequency	110Vin Models	---	170	---	kHz	
	Other Models	---	285	---	kHz	
MTBF(calculated)	MIL-HDBK-217F@25°C, Ground Benign	3,360,000	---	---	Hours	
Safety Approval	UL/cUL 60950-1 recognition (UL certificate), IEC/EN 60950-1(CB-report), EN 50155, IEC 60571					
	UL/cUL 62368-1 recognition (UL certificate), IEC/EN 62368-1 (CB-report)					

Environmental Specifications				
Parameter	Conditions	Min.	Max.	Unit
Operating Ambient Temperature Range (See Power Derating Curve)	Natural Convection	-40	+92	°C
Case Temperature		---	+105	°C
Storage Temperature Range		-50	+125	°C
Cooling Test	Compliance to IEC/EN60068-2-1			
Dry Heat	Compliance to IEC/EN60068-2-2			
Damp Heat	Compliance to IEC/EN60068-2-30			
Shock & Vibration Test	Compliance to IEC/EN 61373			
Humidity (non condensing)		---	95	% rel. H
Lead Temperature (1.5mm from case for 10Sec.)		---	260	°C

**EMC Specifications**

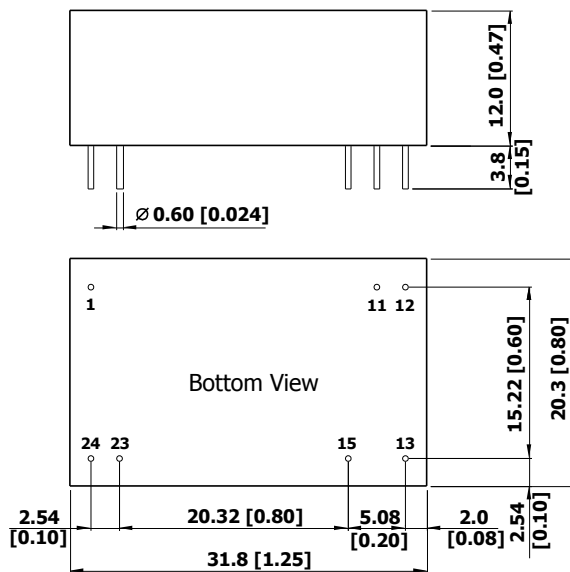
Parameter	Standards & Level		Performance
General	Compliance with EN50121-3-2 Railway Applications		
EMI	Conduction & Radiation	EN 55032, EN 55011, FCC part 15	Class A
EMS	EN 55024		
	ESD	EN 61000-4-2 Air ± 8kV, Contact ± 6kV	A
	Radiated immunity	EN 61000-4-3 10V/m	A
	Fast transient <sub>(4)</sub>	EN 61000-4-4 ±2kV	A
	Surge <sub>(4)</sub>	EN 61000-4-5 ±2kV	A
	Conducted immunity	EN 61000-4-6 10Vrms	A
	PFFM	EN 61000-4-8 3A/M	A

**Power Derating Curve**

**Notes**

- Specifications typical at Ta=+25°C, resistive load, nominal input voltage and rated output current unless otherwise noted.
- Transient recovery time is measured to within 1% error band for a step change in output load of 75% to 100%.
- We recommend to protect the converter by a slow blow fuse in the input supply line.
- To meet EN61000-4-4 & EN61000-4-5 an external capacitor across the input pins is required.  
Suggested capacitor: 24XXX: CHEMI-CON KY Series 470µF/50V.  
48XXX: CHEMI-CON KY Series 330µF/100V.  
110XXX: CHEMI-CON KXG Series 220µF/250V.
- Other input and output voltage may be available, please contact factory.
- That "natural convection" is about 20LFM but is not equal to still air (0 LFM).
- Specifications are subject to change without notice.

**Package Specifications**

## Mechanical Dimensions



## Pin Connections

Pin	Single Output	Dual Output
1	+Vin	+Vin
11	No Pin	Common
12	-Vout	No Pin
13	+Vout	-Vout
15	No Pin	+Vout
23	-Vin	-Vin
24	-Vin	-Vin

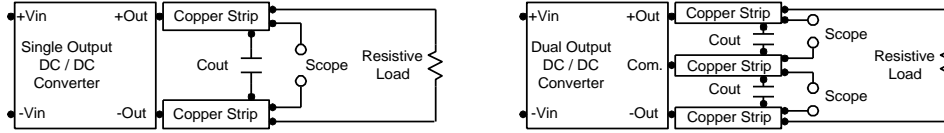
- ▶ All dimensions in mm (inches)
- ▶ Tolerance: X.X±0.5 (X.XX±0.02)  
X.XX±0.25 (X.XXX±0.01)
- ▶ Pin diameter  $\varnothing 0.6 \pm 0.05$  (0.024±0.002)

## Physical Characteristics

Case Size	: 31.8x20.3x12.0mm (1.25x0.8x0.47 inches)
Case Material	: Non-Conductive Black Plastic (flammability to UL 94V-0 rated)
Pin Material	: Tinned Copper
Weight	: 15.4g

**Test Setup**
**Peak-to-Peak Output Noise Measurement Test**

Refer to the output specifications or add 4.7 $\mu$ F capacitor if the output specifications undefine Cout. Scope measurement should be made by using a BNC socket, measurement bandwidth is 0-20 MHz. Position the load between 50 mm and 75 mm from the DC/DC Converter.


**Technical Notes**
**Overload Protection**

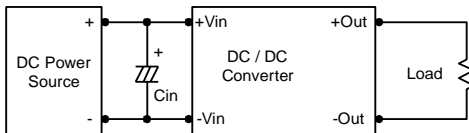
To provide hiccup mode protection in a fault (output overload) condition, the unit is equipped with internal current limiting circuitry and can endure overload for an unlimited duration.

**Input Source Impedance**

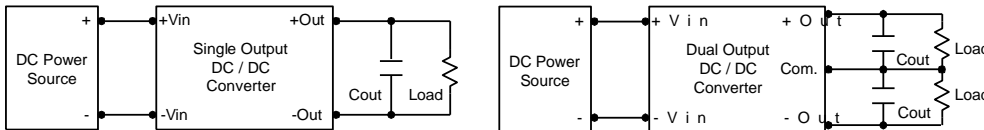
The power module should be connected to a low ac-impedance input source. Highly inductive source impedances can affect the stability of the power module.

In applications where power is supplied over long lines and output loading is high, it may be necessary to use a capacitor at the input to ensure startup.

Capacitor mounted close to the power module helps ensure stability of the unit, it is recommended to use a good quality low Equivalent Series Resistance (ESR < 1.0  $\Omega$  at 100 kHz) capacitor of 4.7 $\mu$ F for the 24V input devices, a 2.2 $\mu$ F for the 48V devices and a 1 $\mu$ F for the 110V devices.


**Output Ripple Reduction**

A good quality low ESR capacitor placed as close as practicable across the load will give the best ripple and noise performance. To reduce output ripple, it is recommended to use 4.7 $\mu$ F capacitors at the output.


**Maximum Capacitive Load**

The MIZI03 series has limitation of maximum connected capacitance at the output. The power module may be operated in current limiting mode during start-up, affecting the ramp-up and the startup time. The maximum capacitance can be found in the data sheet.

**Thermal Considerations**

Many conditions affect the thermal performance of the power module, such as orientation, airflow over the module and board spacing. To avoid exceeding the maximum temperature rating of the components inside the power module, the case temperature must be kept below 105°C. The derating curves are determined from measurements obtained in a test setup.

