

FEATURES

- ▶ Industrial Standard DIP-24 Package
- ▶ Ultra-wide 4:1 Input Voltage Range
- ▶ Fully Regulated Output Voltage
- ▶ High Efficiency up to 87%
- ▶ I/O Isolation 1500 VDC
- ▶ Operating Temp. Range -40°C to +85°C
- ▶ No Min. Load Requirement
- ▶ Overload and Short Circuit Protection
- ▶ Remote On/Off Control
- ▶ Shielded Metal Case with Insulated Baseplate
- ▶ UL/cUL/IEC/EN 62368-1(60950-1) Safety Approval


PRODUCT OVERVIEW

The MINMAX MIWI10 series is a range of cost-optimized 10W DC-DC converter modules with ultra-wide 4:1 input ranges and fixed tightly regulated output voltages. The converters come in a shielded metal package in the standard DIP-24 format. By state-of-the-art circuit topology a high efficiency could be achieved allowing an operating temperature up to +70°C at full load. Further features include remote ON/OFF, under-voltage, overload and short circuit protection. These converters modules will find a wide range of applications like battery operated instrumentation, distributed power architectures in Communication equipment and in industrial electronics.

Model Selection Guide

Model Number	Input Voltage (Range) VDC	Output Voltage VDC	Output Current Max. mA	Input Current		Reflected Ripple Current mA(typ.)	Max. capacitive Load µF	Efficiency (typ.) @Max. Load %
				@Max. Load mA(typ.)	@No Load mA(typ.)			
MIWI10-24S033	24 (9 ~ 36)	3.3	2700	432	30	40	1000	86
MIWI10-24S05		5	2000	490				85
MIWI10-24S051		5.1	2000	500				85
MIWI10-24S12		12	833	479				87
MIWI10-24S15		15	666	478				87
MIWI10-24S24		24	416	478				87
MIWI10-24D12		±12	±416	478				87
MIWI10-24D15		±15	±333	478				87
MIWI10-48S033	48 (18 ~ 75)	3.3	2700	216	20	30	1000	86
MIWI10-48S05		5	2000	245				85
MIWI10-48S051		5.1	2000	250				85
MIWI10-48S12		12	833	239				87
MIWI10-48S15		15	666	236				87
MIWI10-48S24		24	416	244				87
MIWI10-48D12		±12	±416	244				87
MIWI10-48D15		±15	±333	244				87

For each output

Input Specifications

Parameter	Model	Min.	Typ.	Max.	Unit
Input Surge Voltage (1 sec. max.)	24V Input Models	-0.7	---	50	VDC
	48V Input Models	-0.7	---	100	
Start-Up Threshold Voltage	24V Input Models	7	8	9	
	48V Input Models	14	16	18	
Under Voltage Shutdown	24V Input Models	---	---	8.5	
	48V Input Models	---	---	17	
Input Filter	All Models	Internal Pi Type			

Remote On/Off Control						
Parameter	Conditions	Min.	Typ.	Max.	Unit	
Converter On	3.5V ~ 12V or Open Circuit					
Converter Off	0~1.2V or Short Circuit (Pin 1 and Pin 2)					
Control Input Current (on)	Vctrl = 5V	---	---	500	μA	
Control Input Current (off)	Vctrl = 0V	---	---	-500	μA	
Control Common	Referenced to Negative Input					
Standby Input Current	Nominal Vin	---	---	10	mA	

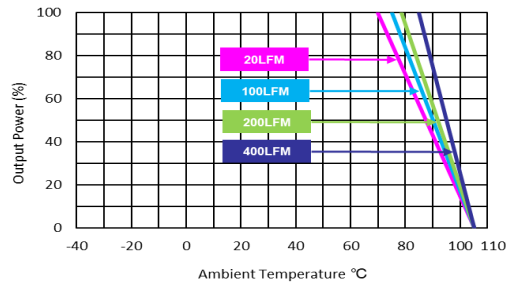
Output Specifications						
Parameter	Conditions	Min.	Typ.	Max.	Unit	
Output Voltage Setting Accuracy		---	±1.0	±2.0	%Vnom.	
Output Voltage Balance	Dual Output, Balanced Loads	---	±1.0	±2.0	%	
Line Regulation	Vin=Min. to Max. @Full Load	---	±0.5	±1.0	%	
Load Regulation	Io=0% to 100%	---	±0.5	±1.2	%	
Minimum Load	No minimum Load Requirement					
Ripple & Noise	0-20 MHz Bandwidth	---	---	100	mV _{P-P}	
Transient Recovery Time	25% Load Step Change	---	300	600	μsec	
Transient Response Deviation		---	±3	±5	%	
Temperature Coefficient		---	±0.01	±0.02	%/ ^o C	
Over Load Protection	Hiccup	---	150	---	%	
Short Circuit Protection	Continuous, Automatic Recovery (Hiccup Mode 0.7Hz typ.)					

General Specifications							
Parameter	Conditions	Min.	Typ.	Max.	Unit		
I/O Isolation Voltage	60 Seconds	1500	---	---	VDC		
	1 Second	1800	---	---	VDC		
I/O Isolation Resistance	500 VDC	1000	---	---	MΩ		
I/O Isolation Capacitance	100kHz, 1V	---	1000	1500	pF		
Switching Frequency		300	330	360	kHz		
MTBF (calculated)	MIL-HDBK-217F@25 ^o C, Ground Benign	1,000,000				Hours	
Safety Approvals	UL/cUL 60950-1 recognition(CSA certificate), IEC/EN 60950-1(CB-report)						
	UL/cUL 62368-1 recognition(UL certificate), IEC/EN 62368-1(CB-report)						

EMC Specifications				
Parameter	Standards & Level			Performance
	EMI ₍₅₎	Conduction	EN55022	Without external components
Radiation		With external components		
EMS ₍₅₎	EN55024			
	ESD	EN61000-4-2 Air ± 8kV , Contact ± 6kV		
	Radiated immunity	EN61000-4-3 10V/m		
	Fast transient	EN61000-4-4 ±2kV		
	Surge	EN61000-4-5 ±1kV		
	Conducted immunity	EN61000-4-6 10Vrms		

Environmental Specifications				
Parameter	Min.	Max.	Unit	
Operating Ambient Temperature Range (See Power Derating Curve)	-40	+85	°C	
Case Temperature	---	+105	°C	
Storage Temperature Range	-50	+125	°C	
Humidity (non condensing)	---	95	% rel. H	
Lead Temperature (1.5mm from case for 10Sec.)	---	260	°C	

Power Derating Curve

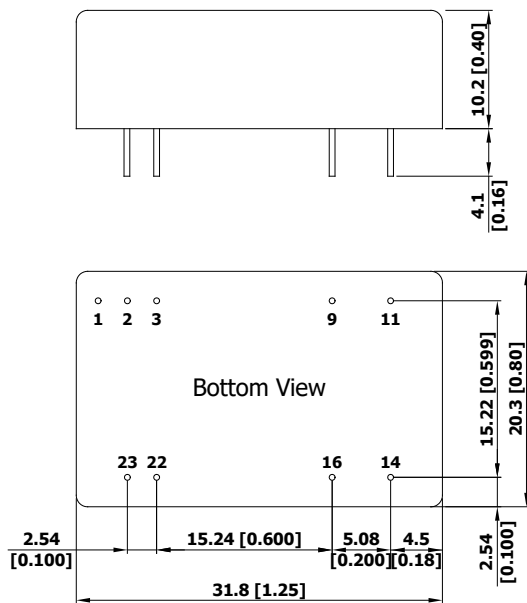


Notes

- 1 Specifications typical at Ta=+25°C, resistive load, nominal input voltage and rated output current unless otherwise noted.
- 2 Transient recovery time is measured to within 1% error band for a step change in output load of 75% to 100%.
- 3 We recommend to protect the converter by a fast blow fuse in the input supply line.
- 4 Other input and output voltages may be available, please contact MINMAX.
- 5 The external components might be required to meet EMI/EMS standard for some of test items. Please contact MINMAX for the solution in detail.
- 6 Specifications are subject to change without notice.

Package Specifications

Mechanical Dimensions



Pin Connections

Pin	Single Output	Dual Output	Diameter mm (inches)
1	Remote On/Off	Remote On/Off	∅ 0.5 [0.02]
2	-Vin	-Vin	∅ 0.5 [0.02]
3	-Vin	-Vin	∅ 0.5 [0.02]
9	No Pin	Common	∅ 0.5 [0.02]
11	NC	-Vout	∅ 0.5 [0.02]
14	+Vout	+Vout	∅ 0.5 [0.02]
16	-Vout	Common	∅ 0.5 [0.02]
22	+Vin	+Vin	∅ 0.5 [0.02]
23	+Vin	+Vin	∅ 0.5 [0.02]

NC: No Connection

- ▶ All dimensions in mm (inches)
- ▶ Tolerance: X.X±0.5 (X.XX±0.02)
X.XX±0.25 (X.XXX±0.01)
- ▶ Pin diameter tolerance: X.X±0.05 (X.XX±0.002)

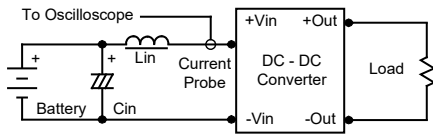
Physical Characteristics

Case Size	: 31.8x20.3x10.2mm (1.25x0.80x0.40 inches)
Case Material	: Metal with Non-Conductive Baseplate
Pin Material	: Copper Alloy
Weight	: 17.3g

Test Setup

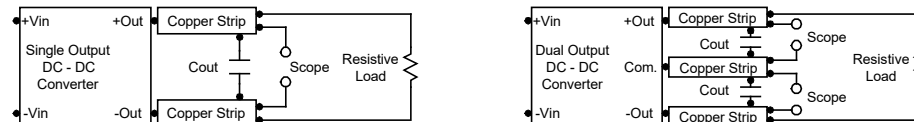
Input Reflected-Ripple Current Test Setup

Input reflected-ripple current is measured with an inductor L_{in} ($4.7\mu H$) and C_{in} ($220\mu F$, $ESR < 1.0\Omega$ at 100 kHz) to simulate source impedance. Capacitor C_{in} , offsets possible battery impedance. Current ripple is measured at the input terminals of the module, measurement bandwidth is 0-500 kHz.



Peak-to-Peak Output Noise Measurement Test

Use a C_{out} $0.47\mu F$ ceramic capacitor. Scope measurement should be made by using a BNC socket, measurement bandwidth is 0-20 MHz. Position the load between 50 mm and 75 mm from the DC-DC Converter.



Technical Notes

Remote On/Off

Positive logic remote on/off turns the module on during a logic high voltage on the remote on/off pin, and off during a logic low. To turn the power module on and off, the user must supply a switch to control the voltage between the on/off terminal and the $-Vin$ terminal. The switch can be an open collector or equivalent. A logic low is 0V to 1.2V. A logic high is 3.5V to 12V. The maximum sink current at the on/off terminal (Pin 1) during a logic low is $-100\mu A$.

Overload Protection

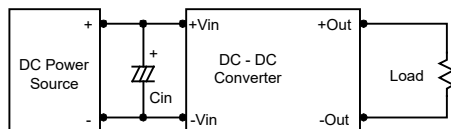
To provide protection in a fault (output overload) condition, the unit is equipped with internal current limiting circuitry and can endure current limiting for an unlimited duration. At the point of current-limit inception, the unit shifts from voltage control to current control. The unit operates normally once the output current is brought back into its specified range.

Overvoltage Protection

The output overvoltage clamp consists of control circuitry, which is independent of the primary regulation loop, that monitors the voltage on the output terminals. The control loop of the clamp has a higher voltage set point than the primary loop. This provides a redundant voltage control that reduces the risk of output overvoltage.

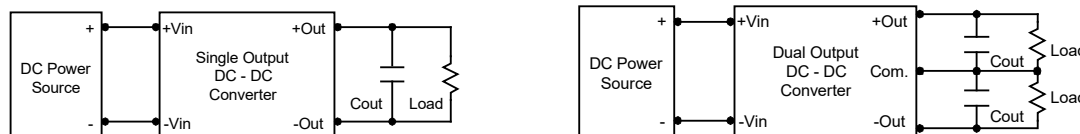
Input Source Impedance

The power module should be connected to a low ac-impedance input source. Highly inductive source impedances can affect the stability of the power module. In applications where power is supplied over long lines and output loading is high, it may be necessary to use a capacitor at the input to ensure startup. By using a good quality low Equivalent Series Resistance ($ESR < 1.0\Omega$ at 100 kHz) capacitor of a $4.7\mu F$ for the 24V input devices and a $2.2\mu F$ for the 48V devices, capacitor mounted close to the power module helps ensure stability of the unit.



Output Ripple Reduction

A good quality low ESR capacitor placed as close as practicable across the load will give the best ripple and noise performance. To reduce output ripple, it is recommended to use $3.3\mu F$ capacitors at the output.



Maximum Capacitive Load

The MIWI10 series has limitation of maximum connected capacitance on the output. The power module may operate in current limiting mode during start-up, affecting the ramp-up and the startup time. The maximum capacitance can be found in the data sheet.

Thermal Considerations

Many conditions affect the thermal performance of the power module, such as orientation, airflow over the module and board spacing. To avoid exceeding the maximum temperature rating of the components inside the power module, the case temperature must be kept below $105^{\circ}C$.

The derating curves are determined from measurements obtained in a test setup.

